

## TUESDAY 11 NOVEMBER

demo  
BY JONATHAN NEWEY - LINE & WASH



Jonathan Newey is an award winning artist with over 20 years of experience in drawing and painting. He comes from a long line of artists in the family and has extensive experience in a wide range of mediums and subject matter, with particular emphasis on wildlife and landscapes.

Tuesday 11 Nov  
Demo by Jonathan Newey  
Line & Wash in Architecture

WINTER EXHIBITION  
Sun 23 Nov to Sat 29 Nov

Tuesday 13 Jan  
Demo by Jill Buckingham  
Pastel Portraits

Tuesday 10 Feb  
Demo by David Lewry  
Watercolour pencil techniques  
(Includes auction of Derwent Pencils)

Tuesday 10 Mar  
Demo by Peter Keegan  
Still Life in Oils

Tuesday 14 April  
Demo by Phil Biggs  
Watercolour Landscape

SPRING EXHIBITION  
Sun 17 May to Sat 23 May

DRAWING EVENINGS  
(members only)  
all 8 - 10 @ The Court House

## SUN 23rd NOVEMBER–SAT 29 NOVEMBER



Berkhamsted Art Society

WINTER EXHIBITION  
open Sun 2pm–4pm : Mon–Sat 9am–5pm

We hope you have had a good summer and have plenty of paintings to exhibit. Your entry form and rules are enclosed with this newsletter

Please remember that we need as much help as possible for setting up on the Sunday and packing up on the Saturday and to man the sitting rota during the week.

## TUESDAY 13 JANUARY

demo  
BY JILL BUCKINGHAM –PASTEL PORTRAITS

I have a passion in life for portraiture. It is my pleasure to devote my experience and artist's sensitivity to the subject. I offer my personal guidance and inspiration throughout the process.

Each portrait is painted with love, to capture the character, values, interests, background, that which is true and relevant to you.



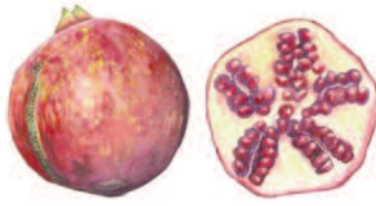
*Monday 3 November*  
**PLEASE NOTE THE DEC  
CHANGE OF DATE FROM**  
–Monday 1 December–  
**TO**  
–Monday 8 December–

*Monday 2 February 15*  
*Monday 2 March 15*  
*Monday 20 April 15*

## TUESDAY 10 FEBRUARY

demo  
BY DAVID LEWRY – WATERCOLOR PENCIL TECHNIQUES  
– Includes auction of Derwent Pencils

David Lewry and his family live in Bedford where he spends his time teaching and painting the beautiful countryside and villages of the Ouse valley. He is an experienced and sensitive teacher in watercolour painting and drawing, especially aware of the needs of adult beginners or those returning to art after many years.



## TUESDAY 10 MARCH

demo  
BY PETER KEEGAN – STILL LIFE IN OILS

Peter Keegan is an award-winning professional artist living and working in Buckinghamshire, specialising in portraiture and landscapes. Working in oils, Peter follows traditional techniques but uses them in a way to depict the scenes he meets in a modern and original style.

## TUESDAY 14 APRIL

demo  
BY PHIL BIGGS – WATERCOLOUR LANDSCAPE

My influences are Turner and the old masters, especially De Wint who mastered tone in watercolour. James Fletcher-Watson, who I had the pleasure of meeting, Ted Wesson, Edward Seago, Roland Hilder and David Bellamy for his energy and enthusiasm and wonderful pictures of the wilder side of our game.



## SATURDAY WORKSHOPS

**SATURDAY 18th October 2014, 10am - 4pm**

'Landscape with river bank, river and trees'  
Watercolour - loose approach  
with JAN MUNRO.

**SATURDAY 7th March 2015 : 10 am to 4 pm**

'Painting Flowers' using watercolour  
with SARAH MORUZZI

During this workshop I intend to show how to "make" a picture using just 1 flower or 1 stem of flowers by starting with loose washes and building up colour and shape. Much emphasis will be placed on the use of colour, tone and negative shape, as well as working wet-in-wet with mixed washes. Painters will need to bring a flower (photographs will not do), their watercolour paints and a piece of watercolour paper taped on to a board.

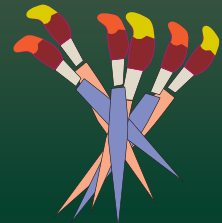
*The workshops will cost £30 each payable to BAS  
To book please ring Liz Hobson 01422 833770 or 07796 050148*

*The workshops are as usual at the Old School, Ashley Green, 10am until 4pm with a break for lunch. We suggest you bring your own packed lunch.  
Coffee and Tea are provided.*

## WINTER EXHIBITION

Don't forget that the exhibition is open on Sunday afternoon from 2pm to 4pm

If members come with their family, friends and clients the afternoon would be a great get together and be just like a private view evening, but not having to turn out in the evening when you could sit and relax.



**ANNUAL SUBSCRIPTIONS OVERDUE still only £20**

Subscriptions are now overdue for those who have not renewed.

It would be helpful if you could get them in urgently.

Please remember they must be submitted BEFORE your entries for the Winter Exhibition



is an independent publication of  
**THE BERKHAMSTED ART SOCIETY**  
which is not affiliated to any other group or organisation

Chairman - Peter Grimer  
Treasurer - Martin Thomas  
Newsletter Editor - Peter Millward  
Programme Secretary Bob Osborn  
Committee Members  
Jackie Harbron, James Honour, Peter Leggott, Pam Short  
Frances Evershed, David Satchell  
Membership enquires to  
Berkhamsted Arts Society, Civic Centre, 161 High St.  
Berkhamsted, HP4 3HD  
or phone 07913 604828  
or [www.berkhamstedartsociety.co.uk](http://www.berkhamstedartsociety.co.uk)