

TUESDAY 10 NOVEMBER

Mixed Media - Still Life

Demonstration by Joanna Stone



During the last 20 years or so I have exhibited in and around Bedfordshire, and belong to the Artists' Network Bedfordshire. I have undertaken a number of commissions over the years and various other works are now also in private collections. During a demonstration I will show the process I work through from the beginning to achieve a finished picture explaining the choices I am making.

DEMONSTRATIONS
Visitors Welcome £3
All 8 - 10 @ THE CIVIC CENTRE

Tuesday 10 November
Joanna Stone
MIXED MEDIA - STILL LIFE

Sunday to Saturday
06 - 12 December
WINTER EXHIBITION

WINTER EXHIBITION

Sun 6th Dec to Sat 12 Dec

open Sun 2pm-4pm : Mon-Sat 9am-5pm

It's been a good summer so I hope you have got lots of painting done and ready for Exhibiting at what is really our Christmas show a good chance to bring in lots of friends and clients

Your entry form and rules are enclosed with this newsletter

Please remember that we need as much help as possible for setting up on the Sunday and packing up on the Saturday and to man the sitting rota during the week.

2016
Tuesday 05 January
DEMONSTRATION
Jo Louca
WATERCOLOUR -
SEASONAL LANDSCAPE

Tuesday 16 February
DEMONSTRATION
Cate Wetherall
PASTEL - ANIMALS

Tuesday 15 March
DEMONSTRATION
Elizabeth Baldin
W'COLOUR/WASH - FLOWERS

Tuesday 12 April
DEMONSTRATION
Marilyn Comparetto
OIL - LANDSCAPES

Sunday to Saturday
8 May - 14 May 2016
SPRING EXHIBITION



TUESDAY 5 JANUARY 2016

Seasonal Landscape in watercolour

Jo Louca



Primarily a landscape painter, but always concentrating on the elemental power of light, atmosphere and the mood of an area. Although I intend a specific reading for each painting I purposefully make the works non prescriptive, allowing the viewer to interpret each work in their own way. Everyone seeing something different I propose to demonstrate some of the techniques and ideas behind my paintings.

TUESDAY 16 FEBRUARY

Animals in Pastel with Cate Wetherall

Inspired by wildlife and animals in their natural environment I try and capture the unique character of my subjects in my artwork keeping my paintings pure with minimal or no backgrounds to emphasize the characteristics of my subjects without distraction. I use pastels, oils, and graphite, producing each painting with empathy, precision and most importantly, with my own style.



TUESDAY 15 MARCH

W/Colour Wash - Flowers with Elizabeth Baldin

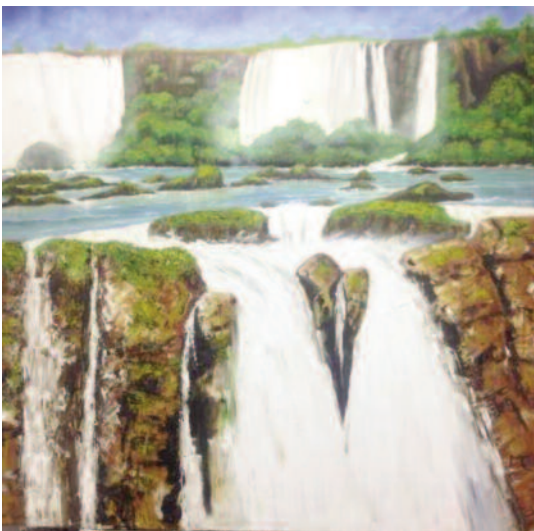


Elizabeth trained at Bristol Art College, where she qualified with a BA (Hons) in graphic design. At the end of her course, she moved back to Berkshire and for many years was employed as a book designer for a major publishing company. She later formed her own design company, which gave

her the freedom to rediscover her love of art and painting. She first exhibited her paintings in 2007 and has taken part in a number of successful exhibitions in and around the Reading area since then.

TUESDAY 12 APRIL

Oil Landscapes with Marilyn Comparetto



Elizabeth trained at Bristol Art College, where she qualified with a BA (Hons) in graphic design. At the end of her course, she moved back to Berkshire and for many years was employed as a book designer for a major publishing company. She later formed her own design company, which gave her the freedom to rediscover her love of art and painting. She first exhibited her paintings in 2007 and has taken part in a number of successful exhibitions in and around the Reading area since then.

DRAWING EVENINGS (members only)

all 8 - 10 @ The Court House

2015

Monday Sept 7

Monday Oct 5

Monday Nov 2

Monday Dec 7

2016

Monday Feb 1

Monday March 7

Mon April 4

(Easter is March 27.)

Please note
This is the last
Newsletter you will
receive if you
haven't renewed
your subscription
You must also be a
paid up member to
enter our exhibitions

SUSAN GRAY EXHIBITION

Susan Gray Studio
1 Robert Mews High Street
Wendover HP22 6D

Sat 7 Nov – Sat 14 Nov
Mon 12 - 4 then 11 - 4 each day

I am having an exhibition of work which includes lots of new paintings, studies and prints of sea and landscapes and also a selection of miniatures taken from my sketches. These are not yet available on the website.

ART
NEWS



is an independent publication of
THE BERKHAMSTED ART SOCIETY
which is not affiliated to any other group or organisation

Chairman - Peter Grimer
Treasurer & Mem Sec - Roger Silverton
Newsletter Editor - Peter Millward
Programme Secretary Bob Osborn
Committee Members
Jackie Harbron, James Honour, Peter Leggott,
Pam Short, Frances Evershed, Brigid Marlin
Membership enquires to
Berkhamsted Arts Society, Civic Centre, 161 High St.
Berkhamsted, HP4 3HD
or phone 07913 604828
or www.berkhamstedartsociety.co.uk